

This is a template you could use for your code.

```
;
; SET PIC8K = 0 FOR 16F873 AND 874 CHIPS - 4K - BOOT START = 0F80H
; SET PIC8K = 1 FOR 16F876 AND 877 CHIPS - 8K - BOOT START = 1F80H
;
PIC8K = 1

    if PIC8K == 0
        list p=16F874
    else
        list p=16F877
    endif

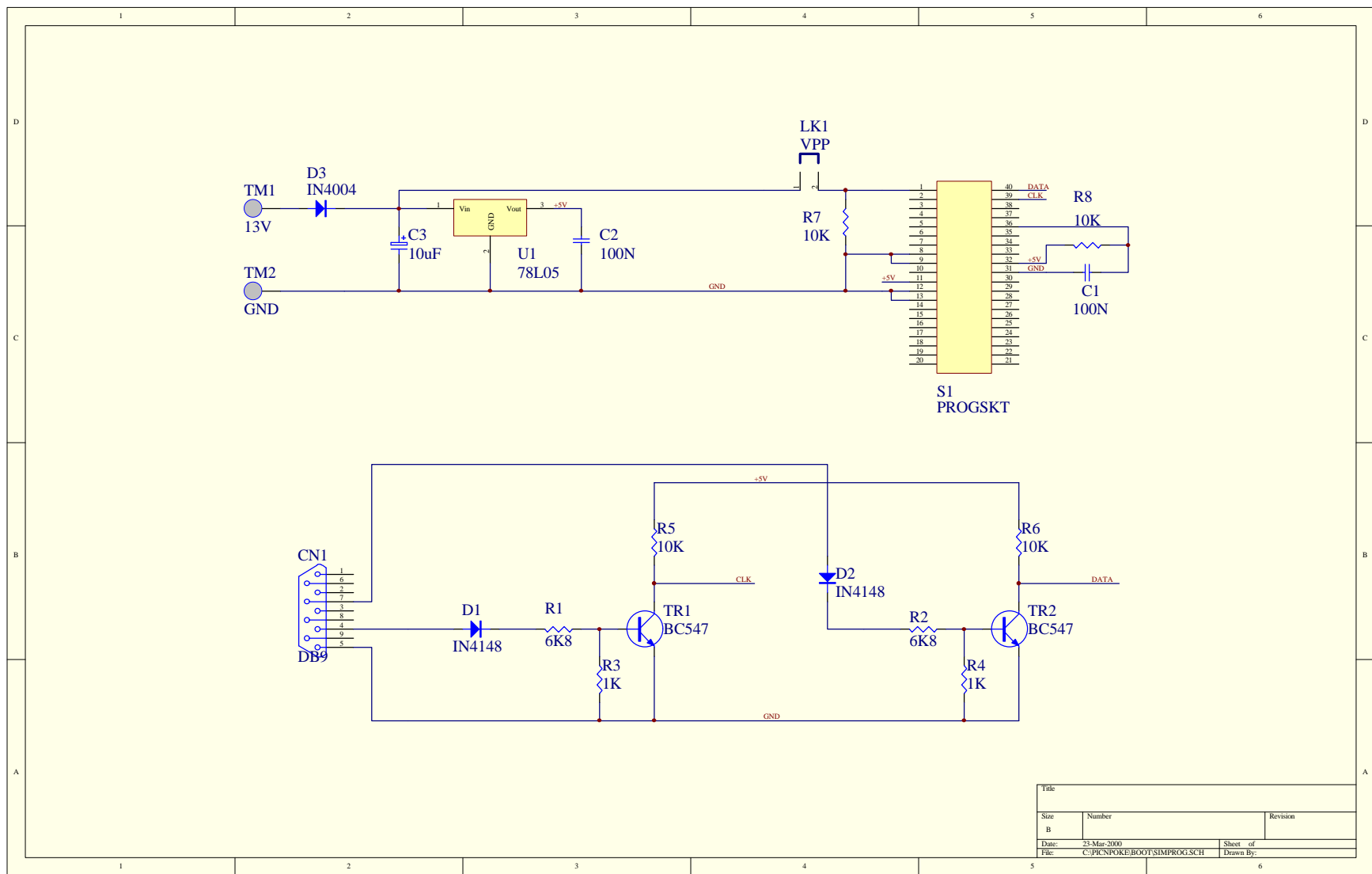
;
; -----
; RESET VECTOR FOR PIC CHIPS
; -----
;
    org 0h

    movlw high(start)
    movwf pclath
    goto Bstart

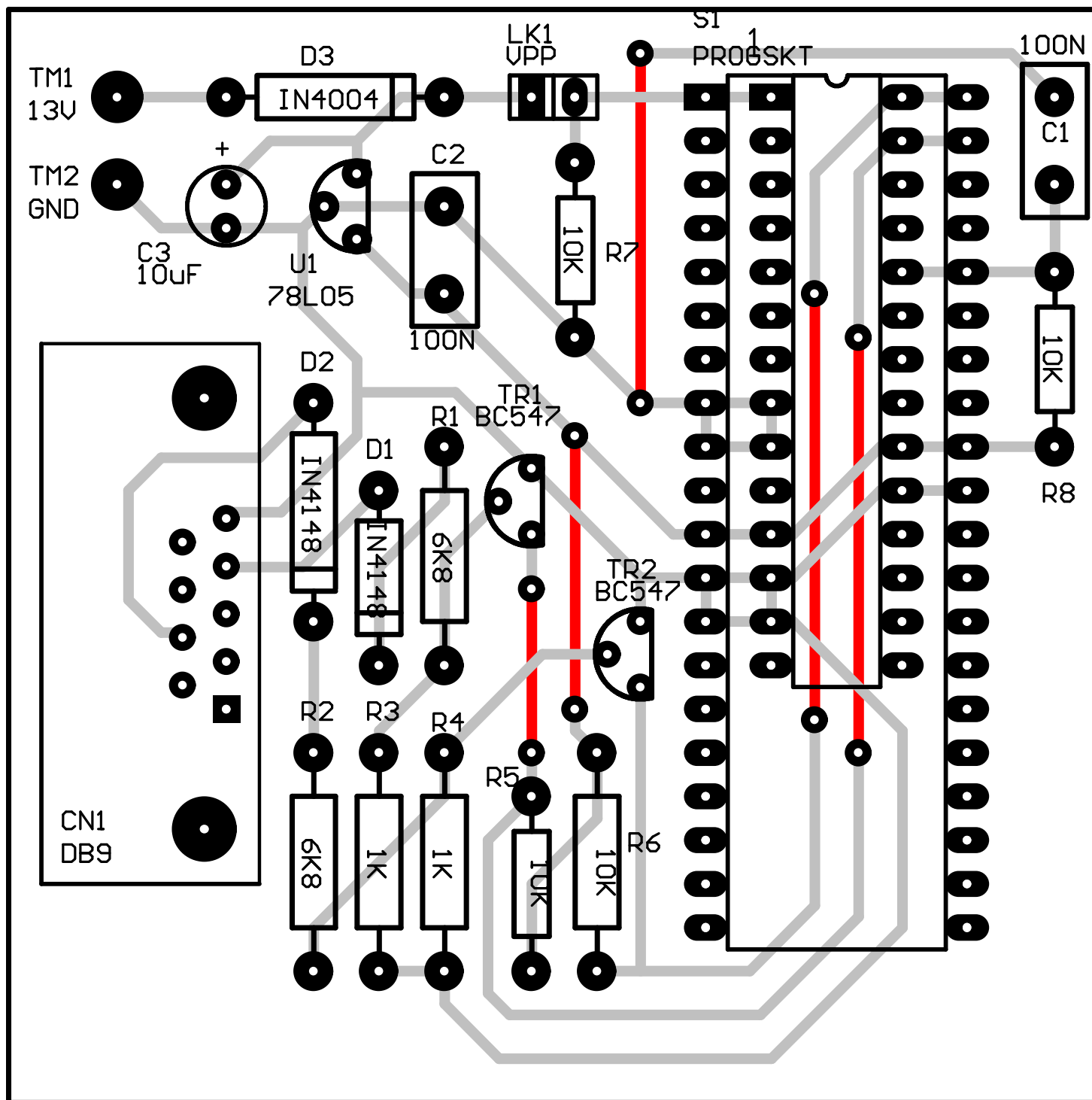
;
; -----
; YOUR CODE BEGINS HERE - 0003h
; -----
;
UBegin
;
; -----
; INTERRUPT VECTOR FOR PIC CHIPS
; -----
;
    org 4h

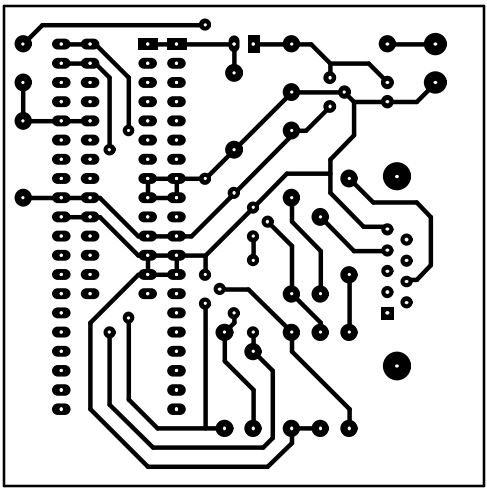
;
; -----
; SET BOOT ADDRESS
; -----
; BOOT start at 0x0F80 (16F873/874)
; BOOT start at 0x0F80 (16F873/874)
;
    if PIC8K == 0
        org 0x0F80
    else
        org 0x1F80
    endif

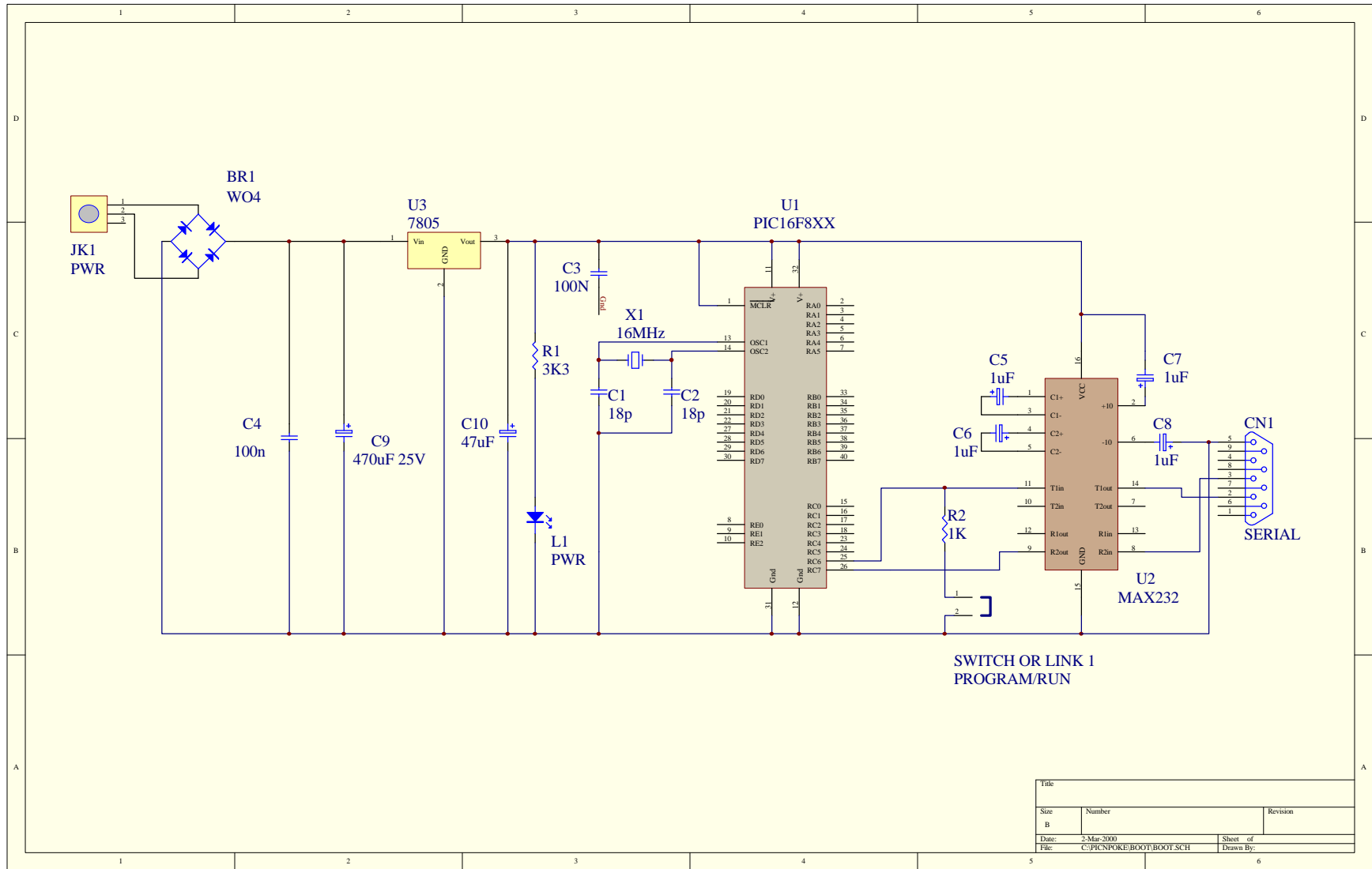
;
; -----
; THIS IS THE ADDRESS OF THE BOOT CODE START
; -----
;
Bstart
```



Title		
Size	Number	Revision
B		
Date:	23-Mar-2000	Sheet of
File:	C:\PIC\POKE\BOOT\SIMPROG.SCH	Drawn By:







Title		
Size	Number	Revision
B		
Date:	2-Mar-2000	Sheet of
File:	C:\PIC\POKE\BOOT\BOOT.SCH	Drawn By: