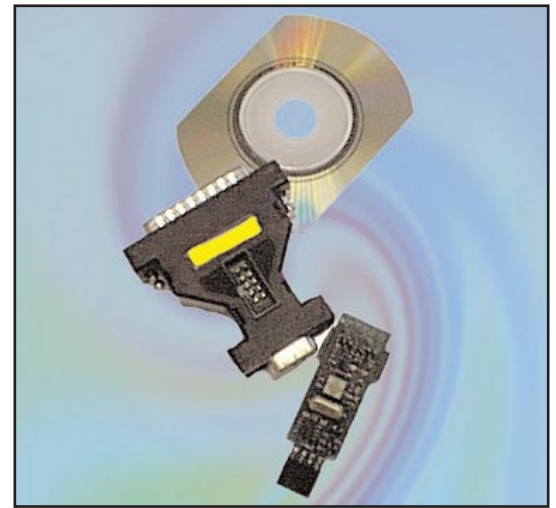


- ◆ Small:  
60×55×16mm
- ◆ Flexible:  
Parallel and  
Serial port  
connection
- ◆ Comprehensive:  
Programs all the  
features of all  
the devices
- ◆ Easy:  
Intuitive  
development  
environment

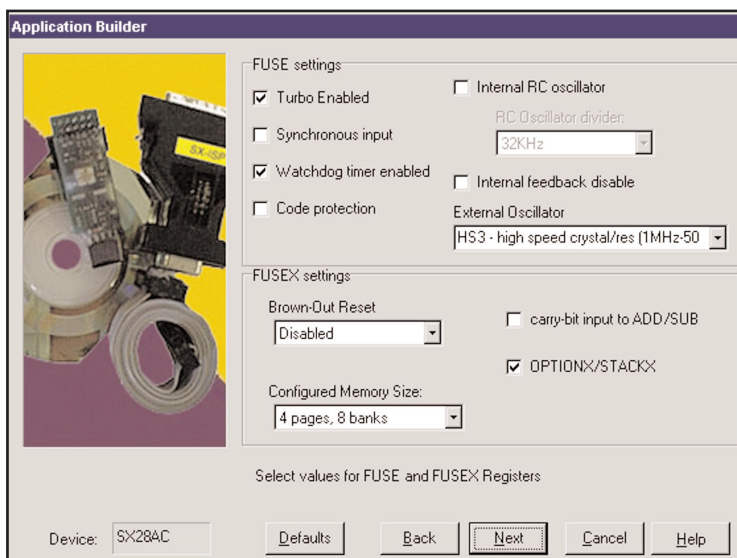
# SX-ISD

**In System Debugging  
solution for SX devices from the  
Leaders in In System technology**



## Why ISD?

A complete development environment allows the whole development process to be carried out on the same desktop so you don't need constant hardware and software changes - just plug and go. The project based IDE makes version control and code organisation quick and easy.



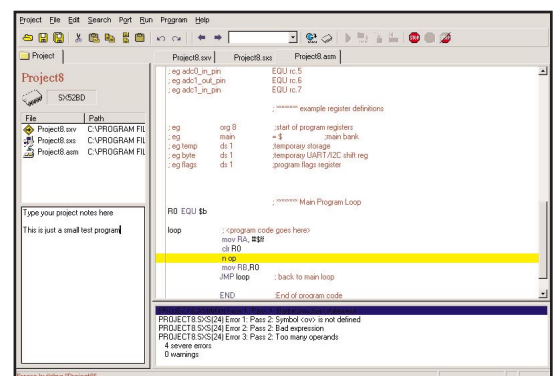
## Application Builder

The built in Application Builder uses simple wizards to create all your setup code including ports, timers and interrupts, as well as device configuration (FUSE/FUSEX). This powerful feature gives you instant source code templates and code examples. It also reduces the need to know all the datasheets before you start your development, saving you time and money.

Designed for programming, the editor has colour coding of keywords and comments and, with the automatic tabbing, this makes your code instantly readable.

## Assembler

The built-in assembler is called with one mouse click or key press so you avoid DOS prompts. The on-screen error listing and highlighting in your source code means that bugs can be fixed easily with no time wasted.



your local SX-ISD distributor is

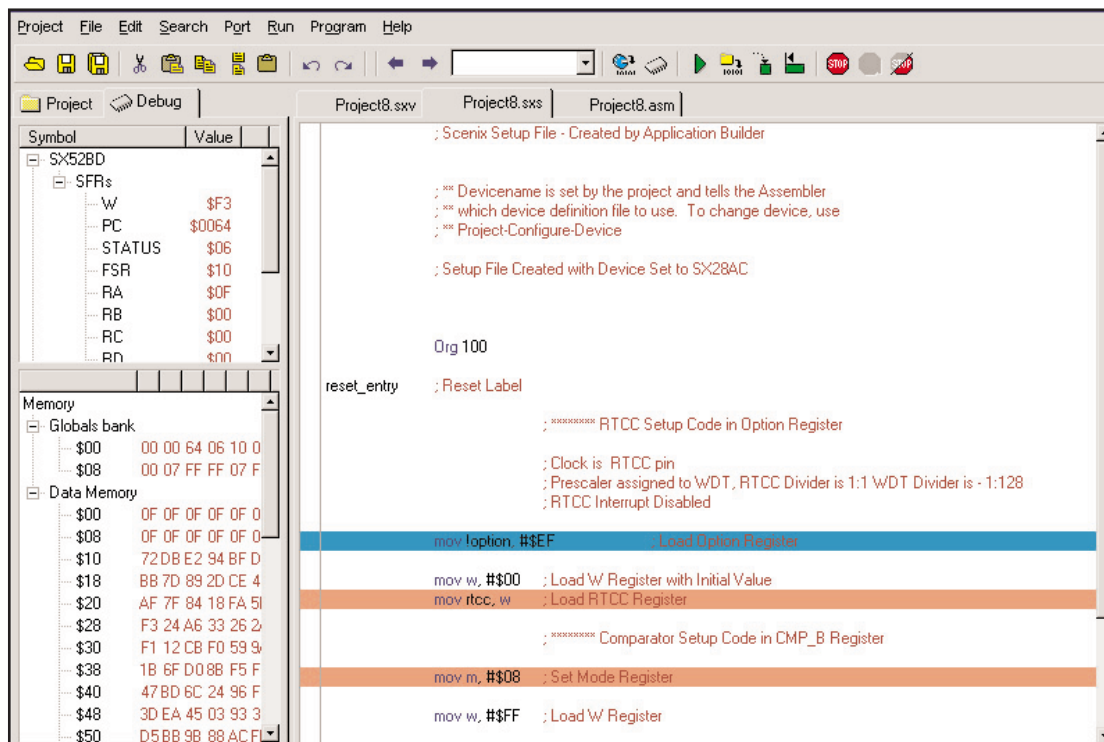
**LOGICAL  
DEVICES, INC.**

LEADER IN DEVICE PROGRAMMING TOOLS

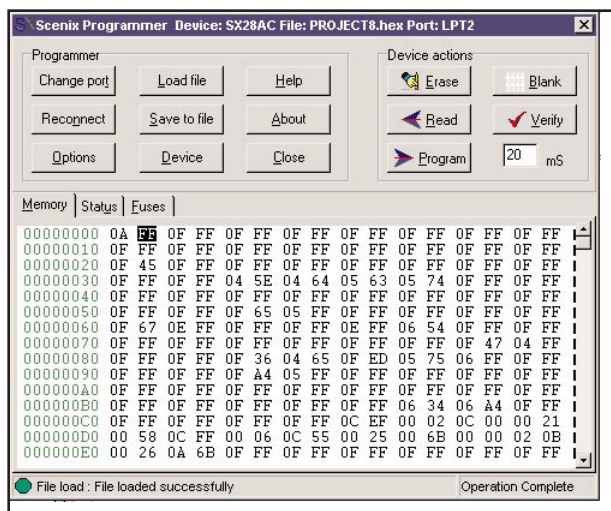
**Kanda.com**

## Emulation

The debugger uses the emulation functions of the SX chips giving genuine emulation on your target instantly and is called quickly and easily. Once all the assembly errors have been fixed, the device is programmed automatically with your code and debug routines.



The current code location is highlighted in your source code. Register files, including ports, and code memory are clearly displayed. Powerful debugging modes include:-



- ◆ Run - at full speed using Programmable Clock option to match your target
- ◆ Run to breakpoints - up to 8 breakpoints can be included in your source code
- ◆ Step - through your code to note and change register values
- ◆ Animate - for faster but precise monitoring of those tricky functions

## ISP

Once your debugging is finished click on Program to call the full function In System Programmer and you are ready for production. The ISP is also available separately

### ◆ Device Support

SX18AC  
SX20AC  
SX28AC  
SX48BD  
SX52BD

◆ Supports  
Win95  
Win98  
Win2000  
WinNT

◆ Order Number  
SX-ISD

### US Office

Logical Devices Inc,  
5758 Lamar St, Arvada, CO 80002, USA.  
Tel: 303 456 2060, Fax: 303 456 2404  
Email: Sales@logicaldevices.net  
Web: www.logicaldevices.net

### UK/European Office

Kanda Systems,  
17/18 Glanrafon Enterprise Park, Aberystwyth,  
Ceredigion. SY23 3JQ. UK  
Tel: +44 (0)1970 621 030, Fax: +44 (0)1970 621 040  
Email: Sales@kanda.com, Web: www.kanda.com

**LOGICAL  
DEVICES, INC.**

LEADER IN DEVICE PROGRAMMING TOOLS

**Kanda.com**