

POCKET PIC PROGRAMMER

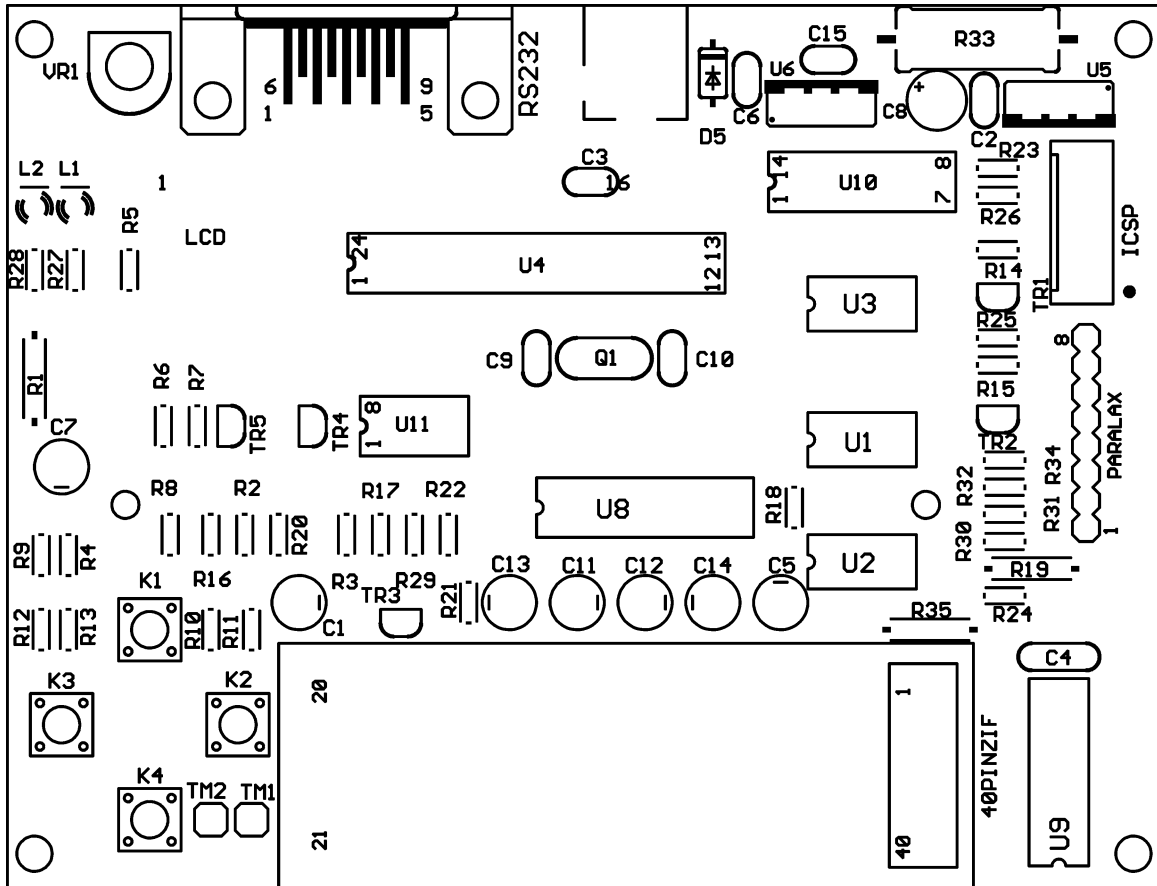
The POCKET programmer is open source software and hardware design by Tony Nixon from Australia.

The latest firmware release and documents may be found at <http://www.bubblesoftonline.com>

The original POCKET design is with SMD parts which are hard to solder by beginners and OLIMEX Ltd. made new PCB layout with only through hole components.

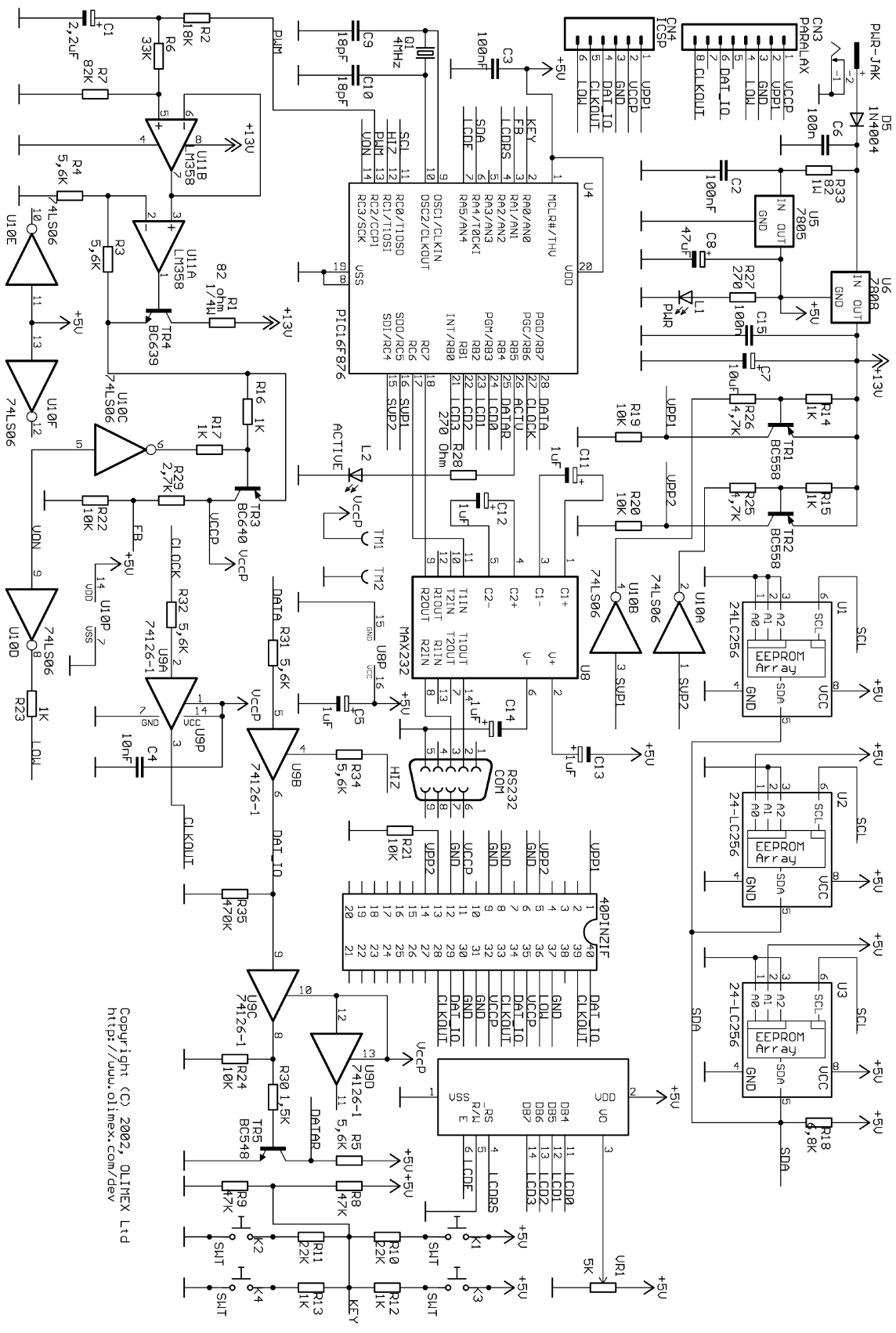
The POCKET programmer kit is sold exclusively by PICKLIST (www.piclist.com)

POCKET BOARD LAYOUT:



POCKET BILL OF MATERIALS:

R1	- 82 ohm 1/4W 5%
R33	- 100 ohm 2W 5%
R27,R28	- 220 ohm 1/8W 5%
R12,R13,R14,R15,R16, R17,R23	- 1K 1/8W 5%
R30	- 1.5K 1/8W 5%
R29	- 2.7K 1/8W 5%
R3,R4,R5,R25,R26,R31, R32,R34	- 4.7K 1/8W 5%
R18	- 6.8K 1/8W 5%
R19	- 10K 1/4W 5%
R20,R21,R22,R24	- 10K 1/8W 5%
R2	- 18K 1/8W 5%
R10,R11	- 22K 1/8W 5%
R6	- 33K 1/8W 5%
R8,R9	- 47K 1/8W 5%
R7	- 82K 1/8W 5%
R35	- 470K 1/4W 5%
VR1	- 5K TRIMER
C9,C10	- 22pF 25VDC NP0 10%
C4	- 10nF 25VDC 10%
C2,C3,C6,C15	- 100nf 25VDC 20%
C5,C11,C12,C13,C14	- 1uF 25VDC 20%
C1	- 2.2uF 25VDC 20%
C7	- 10uF 16VDC 20%
C8	- 47uF 16VDC 20%
Q1	- quartz resonator 4MHz
L1	- green LED 3 mm
L2	- red LED3 mm
D5	- 1N4004
TR5,TR4	- BC337-40
TR1,TR2,TR3	- BC327-40
U10	- 74LS06
U9	- 74HC126
U5	- LM7805
U6	- LM7808
U1,U2,U3	- 24LC256/P on DIL8 sockets
U11	- LM358
U8	- MAX232
U4	- PIC16F876-04/P on DIL28 socket
LCD	- LCD DISPLAY 16x2
LCDdistance	- 2x10pin female distance connector
LCD1	- 1x6pin male connector to LCD pins 1-6
LCD2	- 1x4pin male connector to LCD pins 12-14
PWR-JACK	- Plug in power supply jack
40PINZIF	- ZIF socket 40 pins or 4 pcs 1x20pin female row sockets
PARALAX	- 8pin male connector
ICSP	- 6pin male connector
RS232	- DB9 9 pin female connector
K1, K2, K3, K4	- push buttons



Copyright (C) 2002, OLIMEX Ltd
<http://www.olimex.com/dev>